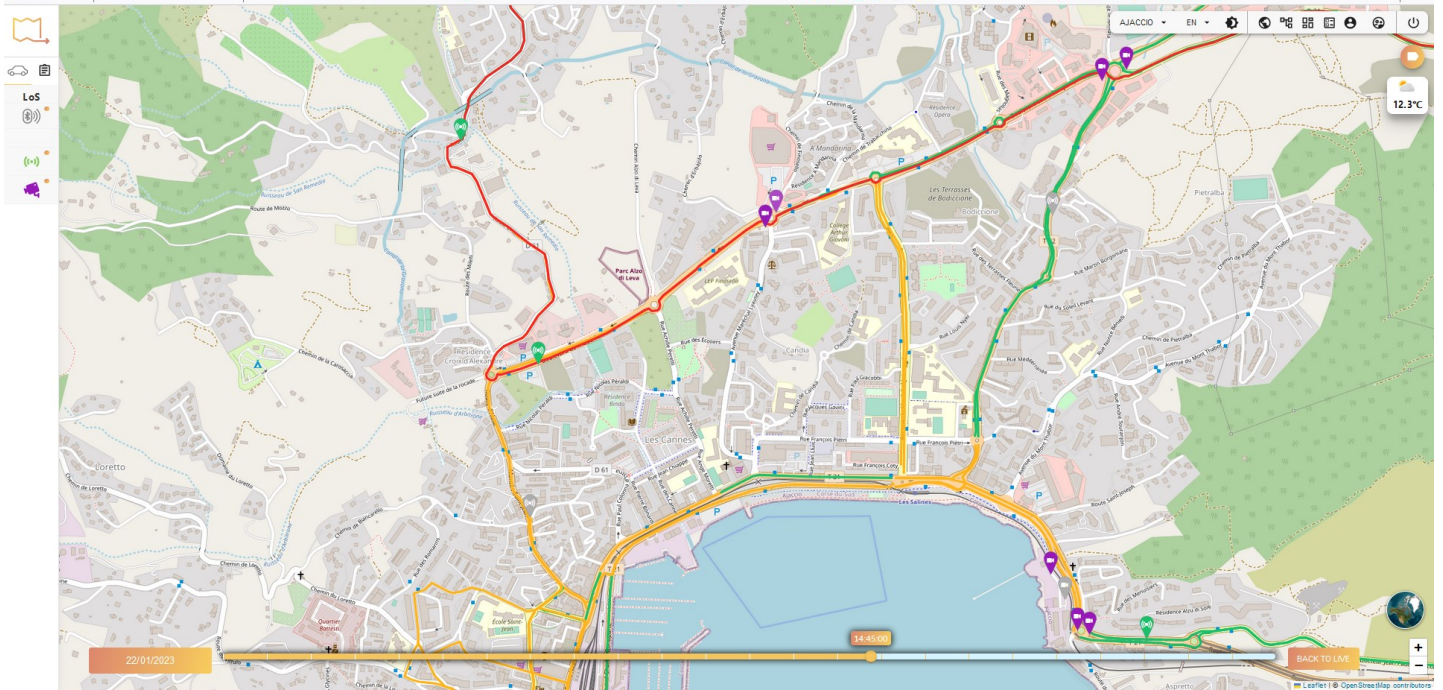




# VCC



**Virtual Control Center** is a highly flexible data analytics engine designed for a variety of traffic data sources.

The system is designed for generating **travel times, congestion alarms, environmental sensors, traffic data** and **images**. VCC uses real-time data quality assessment, and adapts the data intervals according to the statistical probe quality. The system offers a series of different algorithms and filters to adjust to all types of roads and infrastructure.

VCC offers a number of KPIs, comparison matrices, asset management and automatically generated reports crucial to municipalities around the world.

With our dedication to continuous development the specifications are subject to change. To verify the current information please visit [www.virtualcontrolcenter.com](http://www.virtualcontrolcenter.com)

VCC Is a trademark of  
**Traffic Network Solutions**



The screenshot shows a dashboard for 'St Jean-Ornano'. At the top, there is a title 'St Jean-Ornano' with a dropdown arrow. To the right, there are three buttons: '7d', '48h', and '24h'. Below the title, there is a line chart showing 'average\_speed' (blue line with circles), 'delay' (green line with circles), and 'travel\_time' (orange line with circles) over a 24-hour period. The y-axis for the top chart has two scales: 'km/h' on the left (ranging from 3 to 27) and 'Minutes' on the right (ranging from 0 to 2.5). The x-axis shows time intervals from 'Mo 23/01 12:27' to 'We 25/01 09:27'. Below the top chart, there is another line chart showing 'average\_speed' (blue line with circles) over a 24-hour period. The y-axis for the bottom chart is 'AVERAGE\_SPEED' in 'km/h' (ranging from 0 to 120). The x-axis shows time intervals from '15:03' to '14:18'. Below the bottom chart, there are three buttons: 'AVERAGE\_SPEED', 'DELAY', and 'TRAVEL\_TIME'. The legend for the top chart is located below the x-axis, showing 'average\_speed' (blue circle), 'delay' (green circle), and 'travel\_time' (orange circle). The legend for the bottom chart is located below the x-axis, showing '27/09-28/09' (blue circle), '20/09-21/09' (orange circle), '13/09-14/09' (red circle), '06/09-07/09' (green circle), and 'Average' (light blue circle).

Certified SSL Web (TLS 1.2 / 1.3)  
UFW firewall  
AWS Security Groups (firewall)  
GDPR Privacy regulated

# Traffic Network Solutions