



DeepBlue

Sensor



V-model

Travel time, O/D matrices, incident detection, Online web based applications

Bluetooth, Wi-Fi, BLE, GPS, 4G modem, Dual-SIM, Ethernet, Multi-color LED,

Wireless device detection, tracking, RTC Battery, Non-volatile memory

Field proven, easy set-up and configuration, multi-lane, side-fire,

Cost effective, Low power, Self-diagnostics, Autonomous,

Reliable and secure transmission

With our dedication to continuous development the specifications are subject to change. To verify the current information please visit www.deepbluesensor.com

Passionately designed by





DeepBlue

Sensor

POWER SUPPLY

12-48VDC

Typical 3.5W with modem

Typical 1.8 W without modem

PoE (Power over Ethernet)

CPU & MEMORY

ARM 9 Processor

128 MB RAM / Flash

Micro SD storage

COMMUNICATIONS

Ethernet

Internal modem

Dual SIM-Card slot

MQTT Remote Sensor Access

OPERATIONS

Linux based OS

LED for operations diagnostics

ENVIRONMENTAL

-40°C to +80°C 0-90% humidity

NEMA 4X / IP67 housing

Shock/vibration: NEMA TS2-2003

DIMENSIONS & WEIGHT

H x W x L 276 mm x 272 mm x 96.5 mm

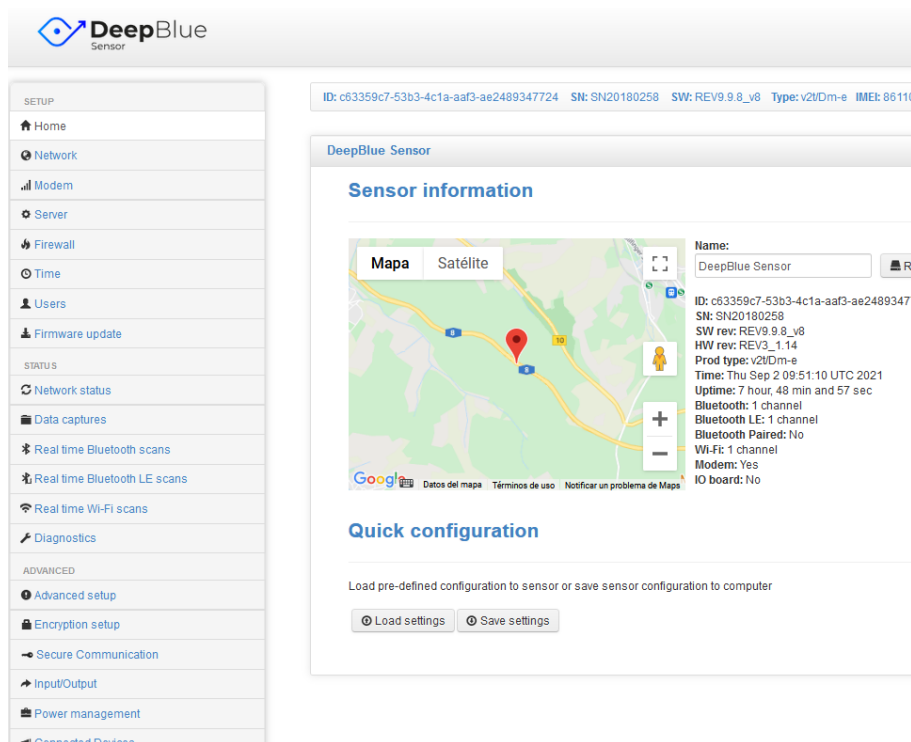
2.00 kg

DETECTION

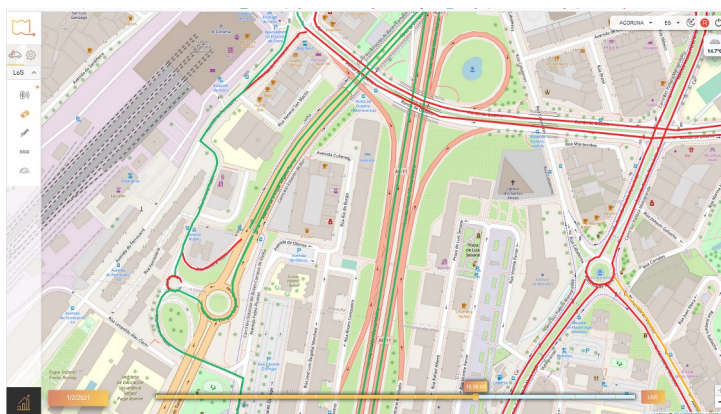
Bluetooth detection internal 12dBi antenna

Wi-Fi detection

BLE detection



V-model



REGULATORY

RoHS Compliant, CE, FCC, IC certified

WARRANTY

2 years standard, extension available

With our dedication to continuous development the specifications are subject to change. To verify the current information please visit www.deepbluesensor.com

Passionately designed by

