

# DeepBlue<sup>v2t</sup> Sensor



C-model

*Travel time, O/D matrices, incident detection, Online web based applications, Cabinet w/solar*

*Bluetooth, Wi-Fi, GPS, 3G, Dual-SIM, Ethernet, Multi-color LED, GPIO, RTC Battery, Non-volatile memory*

*Field proven, easy set-up and configuration, multi-lane, side-fire, Wireless device detection, tracking*

*Cost effective, Low power, Self-diagnostics, Autonomous, Reliable and secure transmission*

CABINET | BLUETOOTH &  
VERSION | V2t-PLATFORM

With our dedication to continuous development the specifications are subject to change. To verify the current information please visit [www.deepbluesensor.com](http://www.deepbluesensor.com)

Passionately designed by

**trafficnow<sup>®</sup>**

# DeepBlue

## Sensor



### POWER SUPPLY

12 to 48 VDC

Min 1.22 W (configuration dependent)

### CPU & MEMORY

ARM 9 Processor

128 MB RAM / Flash

Micro SD storage

### COMMUNICATIONS

Ethernet

Optional 3G/CDMA Worldwide

Remote Sensor Access

Optional General Purpose IO

### OPERATIONS

Linux based OS

LED for operations diagnostics

### ENVIRONMENTAL

-40°C to +80°C

Shock/vibration: NEMA TS2-2003

### CABINET DIMENSIONS & WEIGHT

H x W x L 400 mm x 300 mm x 200 mm

3.50 kg (excl. Battery and solar panel)

### BLUETOOTH

Single or Dual channel operation

Detects all standard Bluetooth® versions

More than 500 meters range

Up to -104dB receive sensitivity

### WI-FI

Optional Wi-Fi detection

### REGULATORY

RoHS Compliant

CE, FCC certified

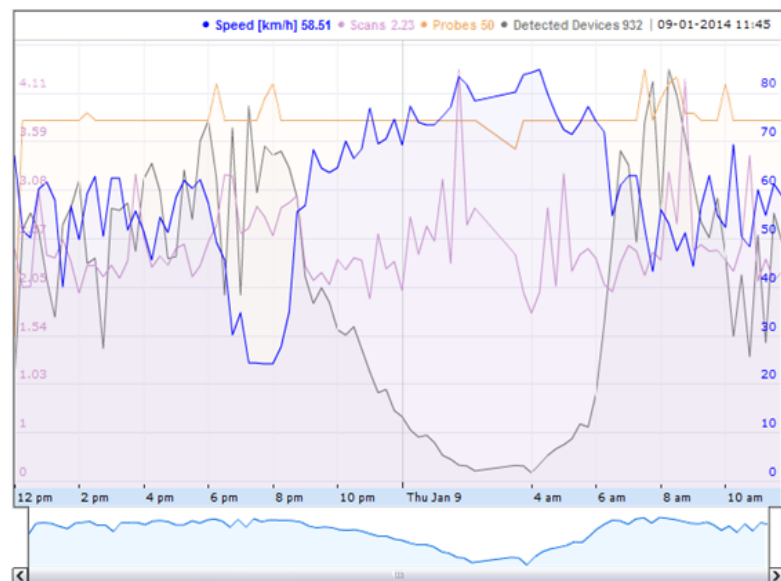
#### Real Time Segment data

Click on a segment in order to display its information

|   |   |
|---|---|
| Segment:                                | [8] Av. Nardisa de Jesús Sector Sauces->Puente Unidad Nacional (Puntilla-Guila) |
| Segment length:                         | 6200 m  |
| Heavy traffic if speed is below:        | 30.00 km/h  |
| Free-flowing traffic if speed is above: | 40.00 km/h  |
| Average speed in segment:               | 49.29 km/h  |
| Average travel time:                    | 0 h 7 m 33 s  |
| Sample Size:                            | 10  |
| Detected Devices:                       | 146   |
| Time interval:                          | 2014-01-09 11:54:00   |

#### Most recent Historic values

Show OD Matrix Show History



C-model



With our dedication to continuous development the specifications are subject to change. To verify the current informa-

Passionately designed by

**trafficnow®**